



Butler County Board of Elections

Phone (513) 887-3700
(513) 424-0469

Fax (513) 887-5535
www.butlercountyelections.org

May 6, 2014 Post-Election Profile

284 Precincts
91 Polling Locations

317 Districts

- 1 Federal
- 10 State
- 2 County
- 10 Judicial
- 2 Schools
- 1 Township
- 7 State Central Committee
- 284 County Central Committee

526 Candidates

- 6 Federal
- 31 State
- 7 County
- 14 Judicial
- 19 State Central Committee
- 351 Republican Central Committee
- 95 Democratic Central Committee
- 3 Libertarian Central Committee

5 Issues

- 1 State
- 2 Schools
- 1 Township
- 1 Local Option

Voter Turnout: 17.63%

234,320 Registered Voters

41,299 Ballots Cast

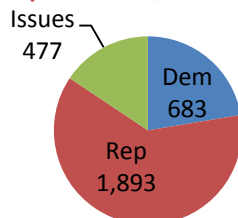
36,125 Ballots Cast on Election Day (87%)

4,867 Ballots Cast Early (12%)

307 Valid Provisional Ballots Cast (<1%)

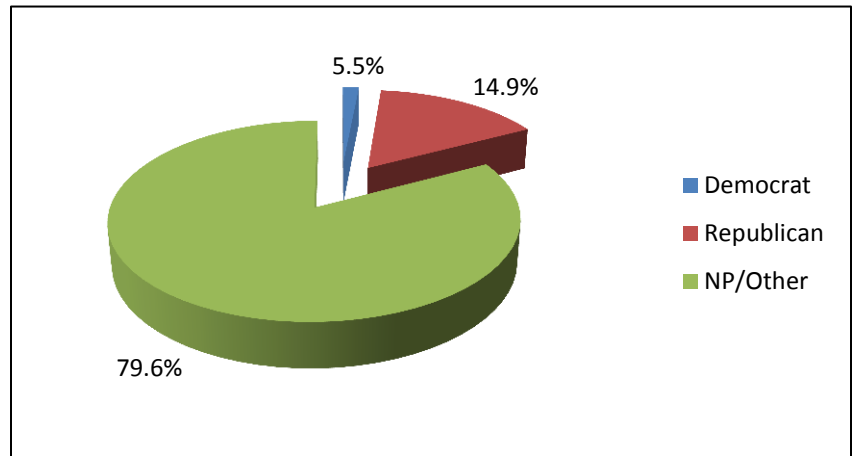
May 2014 Vote-by-Mail Ballots Requested: 3,056

- 683 Democrat
- 1,893 Republican
- 477 Issue Only
- 3 Minor Party



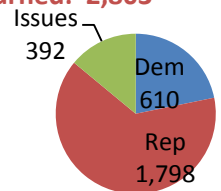
Total Registered Voters: 234,320

- 3,531 Democrat
- 36,956 Republican
- 193,833 Nonpartisan/Other



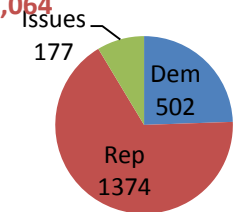
May 2014 Vote-by-Mail-Ballots Returned: 2,803

- 610 Democrat
- 1,798 Republican
- 392 Issue Only
- 3 Minor Party



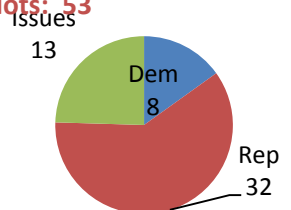
May 2014 In-Person Early Voters: 2,064

- 502 Democrat
- 1,374 Republican
- 177 Issue Only
- 11 Minor Party



May 2014 Challenged Absentee Ballots: 53

- 8 Democrat
- 32 Republican
- 13 Issue Only
- 0 Minor Party



Challenged Provisional Ballots: 37

- 23 Not Registered
- 4 Wrong Polling Location
- 5 No Signature
- 5 Invalid Second Votes

Ballots Cast by the Voter's Party Affiliation and by Ballot Type in Even-Year Primary Elections 2006-2014

2006 May Primary

- 232,268 Registered Voters
- 36,396 Total ballots cast
- 7,114 Cast by Democrats
- 24,414 Cast by Republicans
- 4,868 Issues Only/Minor Party Cast
- 2,784 Early Ballots Cast (8%)
- 33,612 Election Day Ballots Cast (92%)
- 416 Provisional Ballots Cast (1%)

2010 May Primary

- 237,445 Registered Voters
- 55,534 Total ballots cast
- 13,142 Cast by Democrats
- 35,113 Cast by Republicans
- 7,279 Issues Only/Minor Party Cast
- 6,041 Early Ballots Cast (10.9%)
- 49,493 Election Ballots Cast (89%)
- 655 Valid Provisional Ballots Cast (1%)

2008 March Primary

- 244,188 Registered Voters
- 94,053 Total ballots cast
- 51,450 Cast by Democrats
- 40,664 Cast by Republicans
- 387 Issue Only Ballots Cast
- 10,459 Early Ballots Cast (11%)
- 83,594 Election Day Ballots Cast (89%)
- 3,319 Valid Provisional Ballots Cast (4%)

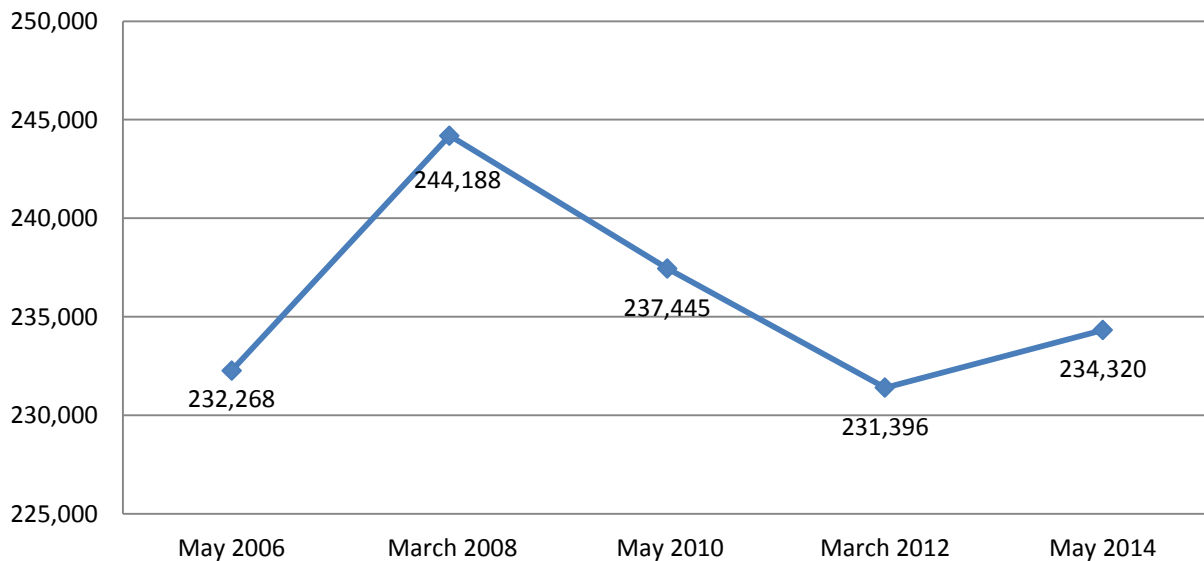
2012 March Primary

- 231,396 Registered Voters
- 42,689 Total ballots cast
- 3,770 Cast by Democrats
- 38,625 Cast by Republicans
- 294 Issues Only/Minor Party Cast
- 5,093 Early Ballots Cast (12%)
- 37,596 Election Day Ballots Cast (88%)
- 342 Valid Provisional Ballots Cast (0.8%)

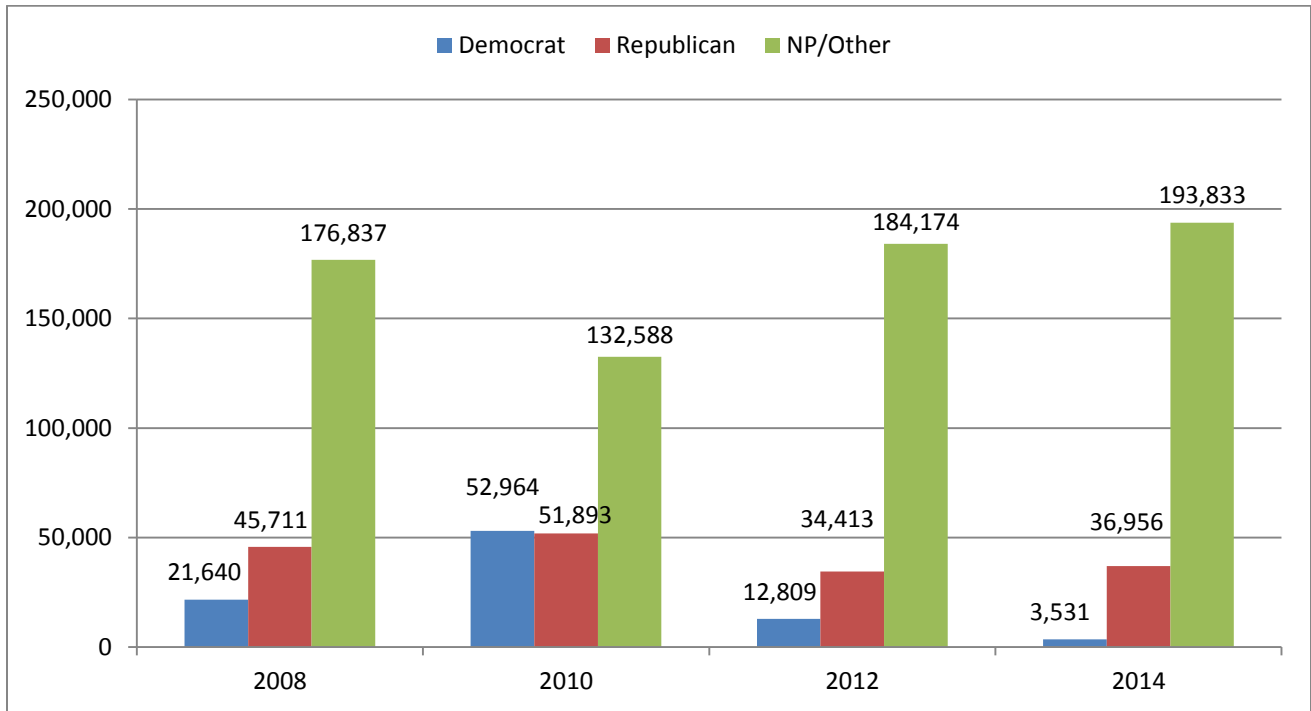
2014 May Primary

- 234,320 Registered Voters
- 41,299 Total ballots cast
- 7,542 Cast by Democrats
- 30,004 Cast by Republicans
- 3,753 Issues Only/Minor Party Cast
- 4,867 Early Ballots Cast (12%)
- 36,125 Election Day Ballots Cast (87%)
- 307 Valid Provisional Ballots Cast (0.7%)

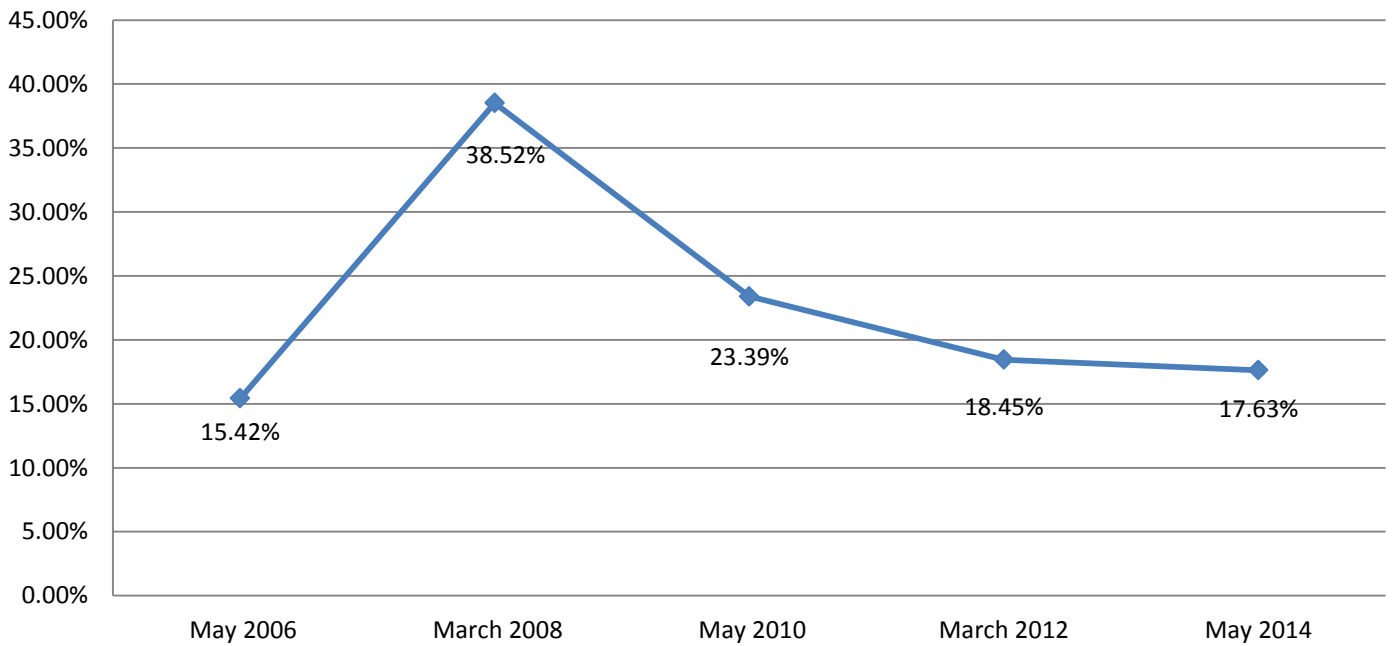
Voter Registration Trends in Even-Year Primary Elections: 2006-2014



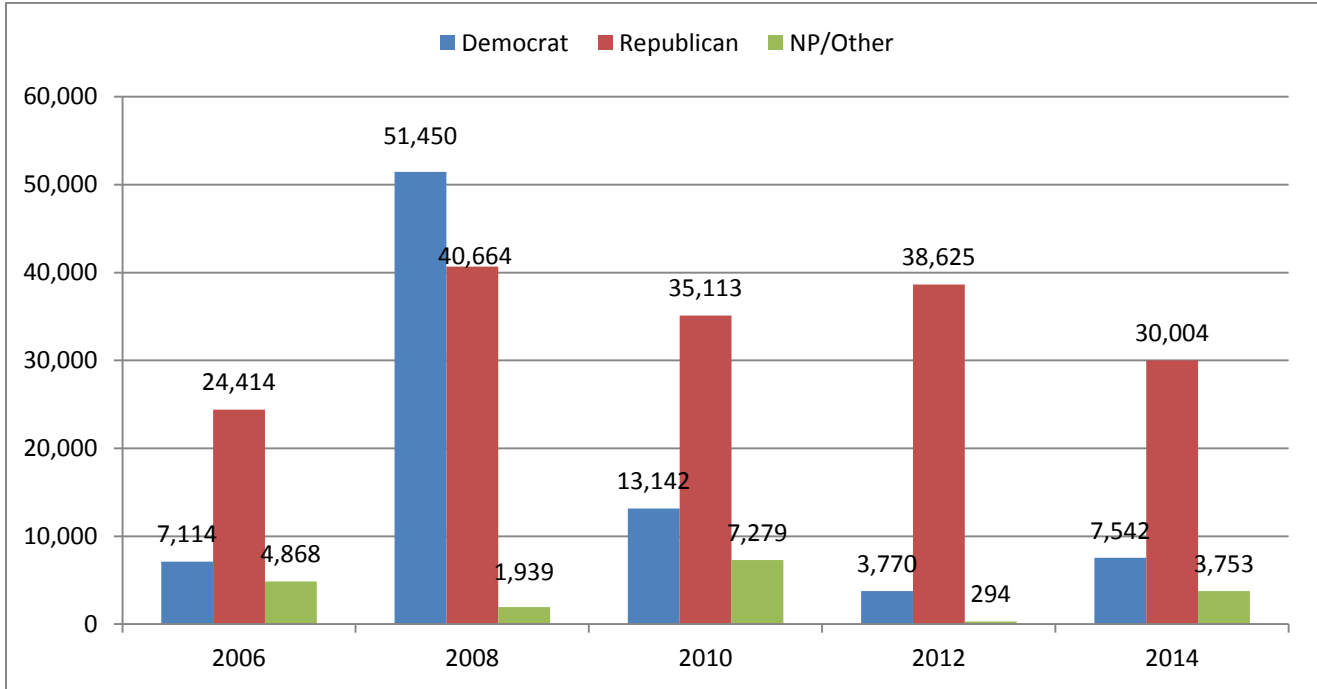
Voter Registration Trends in Even-Year Primary Elections: 2006-2014



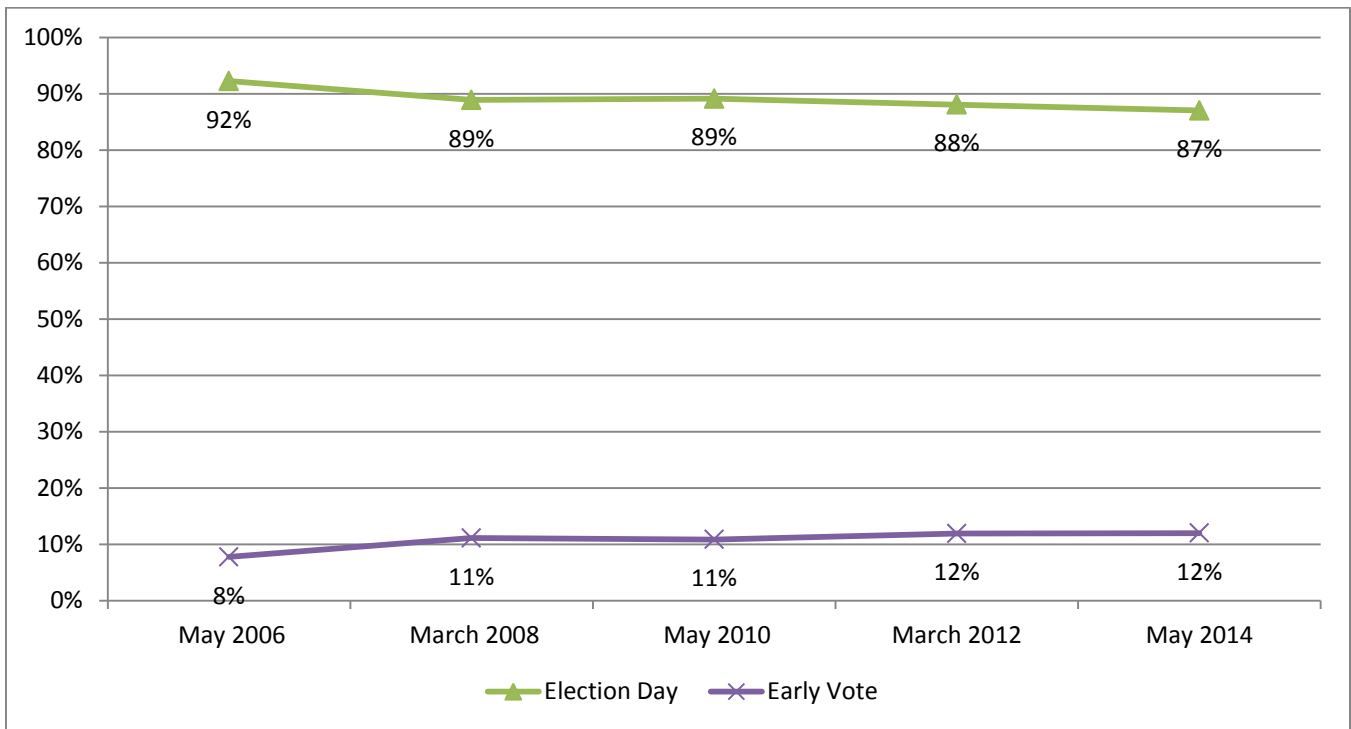
Election Turnout in Even-Year Primary Elections: 2006-2014



Election Turnout in Even-Year Primary Elections: 2006-2014



Early Voting Compared to Election Day Ballots in Even-Year Primary Elections: 2006-2014



In-Person Early Voting Compared to Vote by Mail in Even-Year Primary Elections: 2006-2014

