



November 5, 2013 Post Election Profile

284 Precincts in the Election
91 Polling Locations

42 Districts

- 7 Municipal
- 6 Village
- 13 Township
- 20 School

194 Candidates

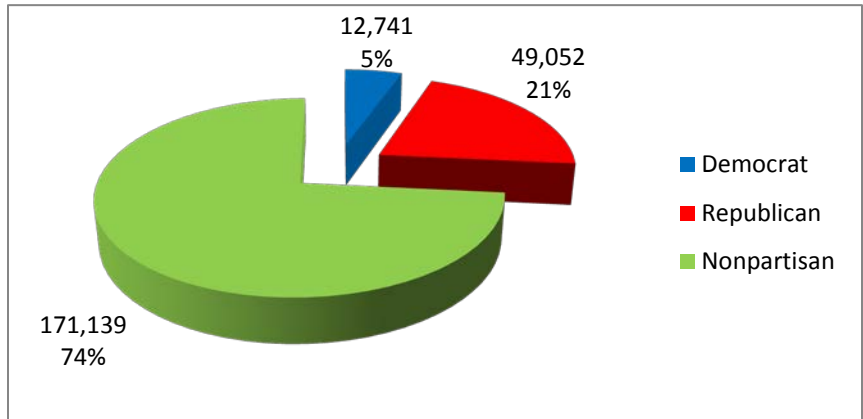
- 37 Municipal
- 10 Village
- 63 Township
- 84 School

14 Issues

- 0 County
- 2 Municipal
- 4 Township
- 3 School
- 5 Local Option

Total Registered Voters: 232,711

- 12,741 Democrat
- 49,052 Republican
- 171,139 Nonpartisan
- 41 Constitution
- 55 Green
- 282 Libertarian
- 10 Socialist



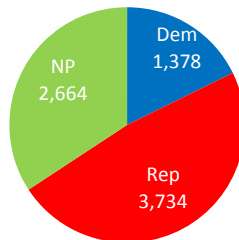
27.19% Turnout
63,279 Ballots Cast
55,431 Ballots cast on Election Day (88%)
7,364 Ballots cast Early (12%)
483 Valid Provisional Ballots Cast (0.7%)

Challenged Absentee Ballots: 54

- 33 Returned Late
- 12 No ID
- 2 Invalid signature on ID Env
- 2 No stub attached
- 5 Undeliverable

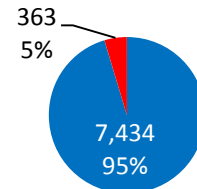
Vote by Mail Ballots Requested: 7,797

- 1,378 Democrat
- 3,734 Republican
- 2,664 Nonpartisan
- 21 Minor Party



Vote by Mail Turnout: 12%

- Vote by Mail Returned, Valid and Invalid
- Vote by Mail Requested, Not Returned

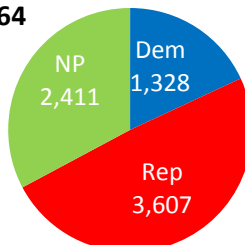


In-Person Early Voters: 2,997

Included in Total Ballots Returned.

Vote by Mail Ballots Returned: 7,364

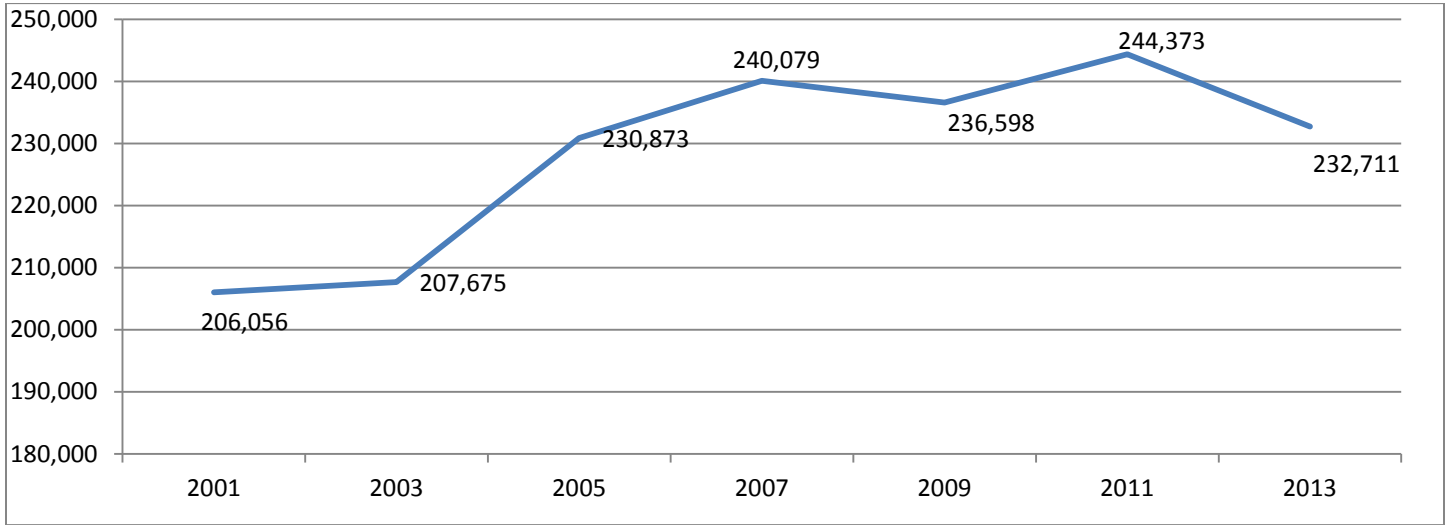
- 1,328 Democrat
- 3,607 Republican
- 2,411 Nonpartisan
- 19 Minor Party



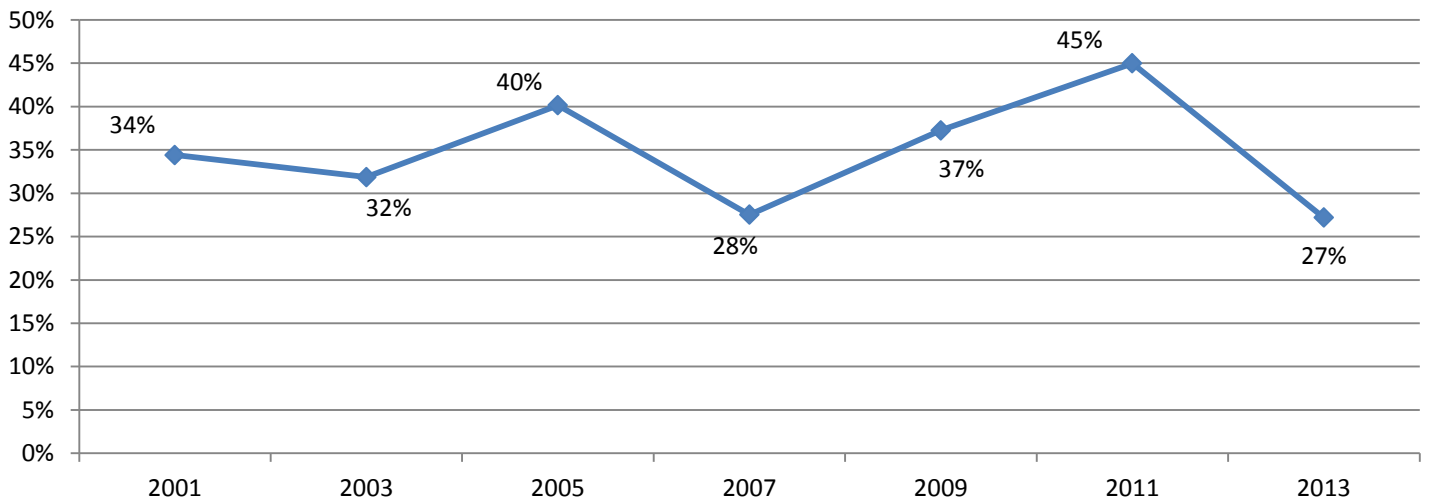
Challenged Provisional Ballots: 52

- 40 Not Registered
- 8 Wrong polling location
- 3 Missing signature
- 1 Missing ID

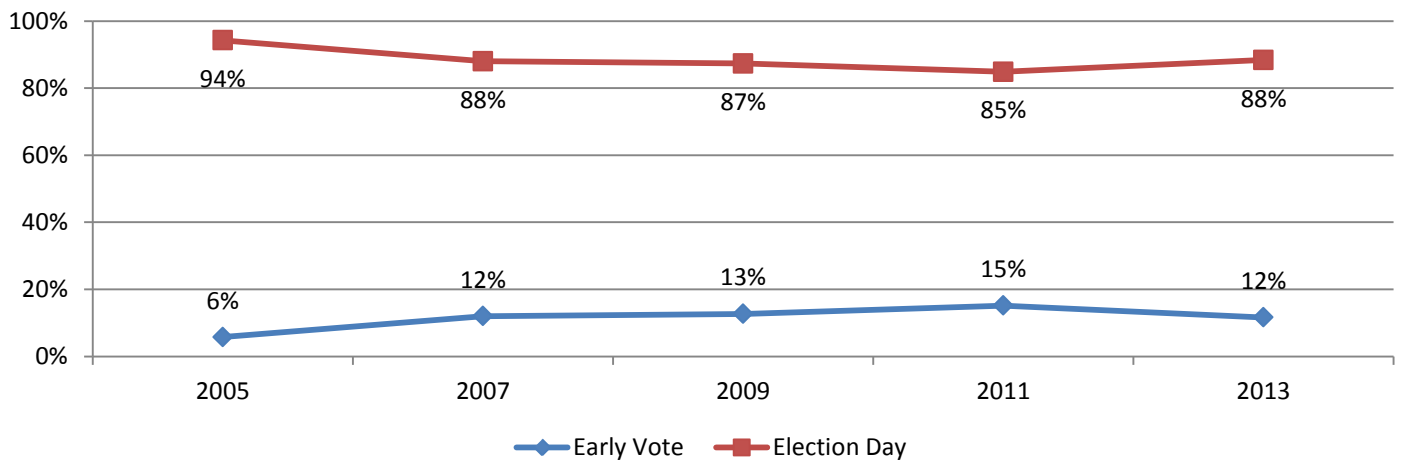
Voter Registration Trends in Odd Year Elections: 2001-2013



Election Turnout in Odd Year Elections: 2001-2013



Early Voting Compared to Election Day Ballots in Odd Year Elections: 2005-2013



In-Person Early Voting Compared to Vote by Mail in Odd Year Elections: 2005-2013

